

SHINDENGEN

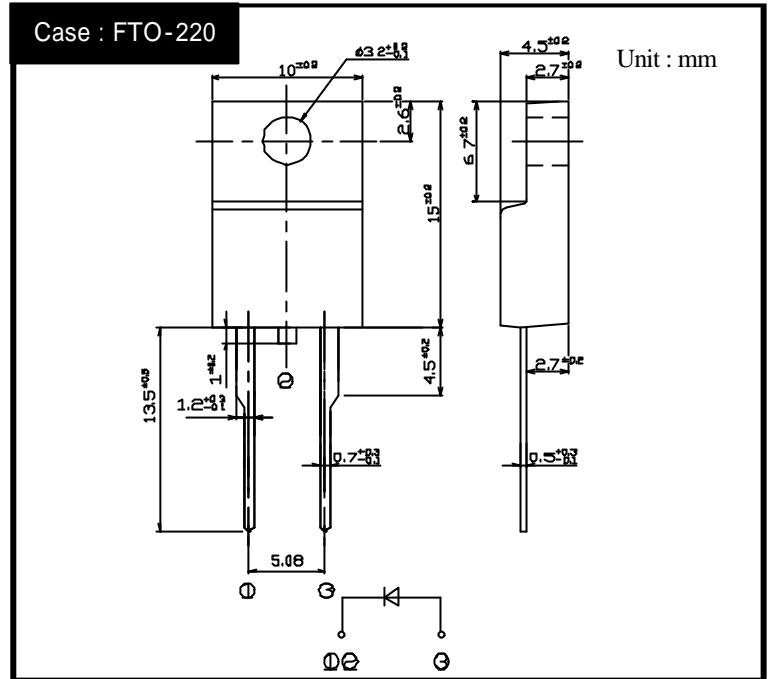
Super Fast Recovery Rectifiers

Single

SF10L60U

600V 10A

OUTLINE DIMENSIONS



RATINGS

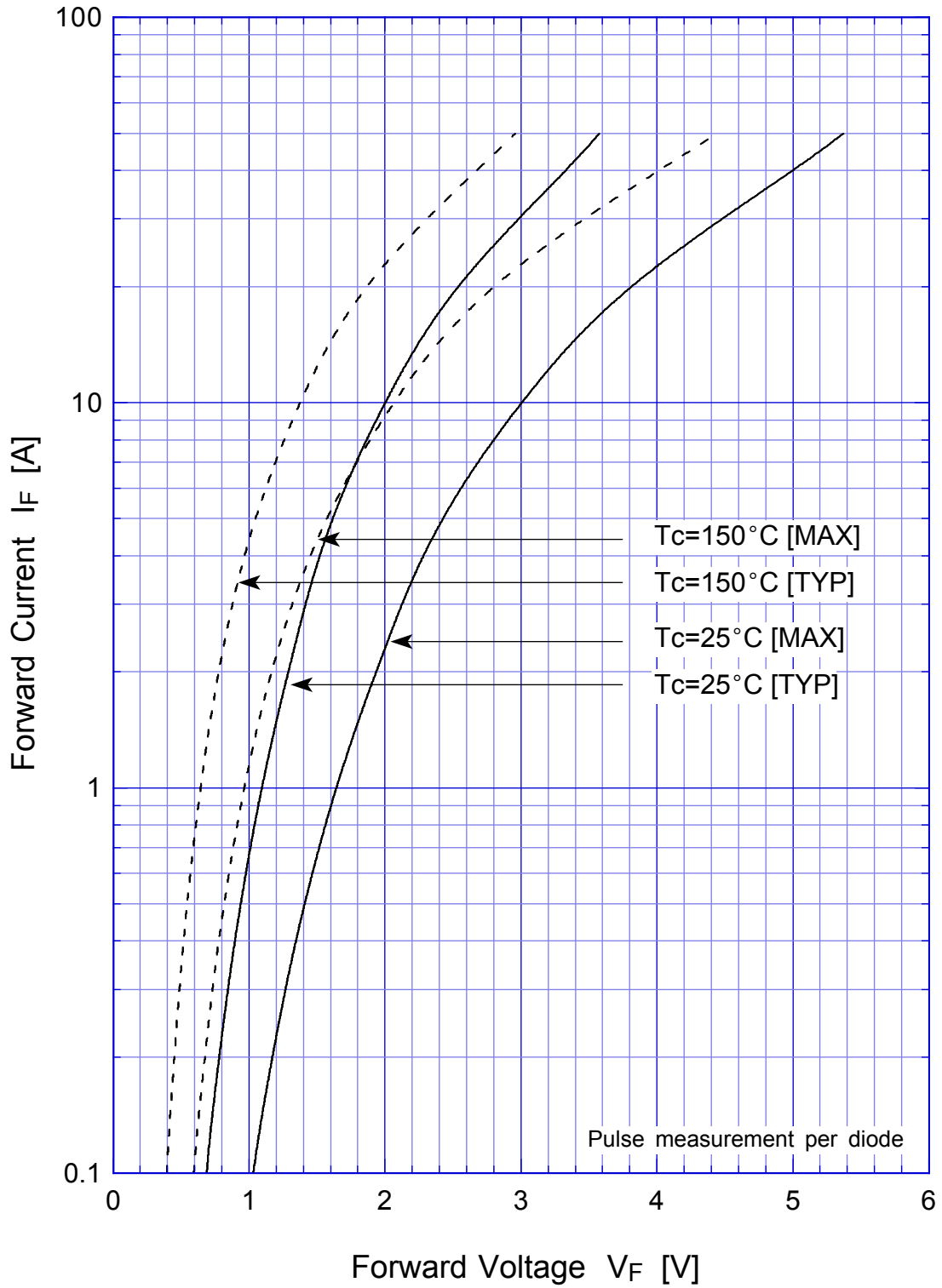
Absolute Maximum Ratings (If not specified Tc=25)

| Item | Symbol | Conditions | Ratings | Unit |
|-----------------------------------|------------------|--|-----------|------|
| Storage Temperature | Tstg | | -55 ~ 150 | |
| Operating Junction Temperature | Tj | | 150 | |
| Peak Reverse Voltage | V _{RM} | | 600 | V |
| Average Rectified Forward Current | I _o | 50Hz sine wave, resistance load, Tc=85 | 10 | A |
| Peak Surge Forward Current | I _{FSM} | 50Hz sine wave, Non-repetitive 1 cycle peak value, Tj=25 | 120 | A |
| Dielectric Strength | V _{dis} | Terminals to case, AC 1 minute | 2 | kV |
| Mounting Torque | TOR | (Recommended torque) | 0.5(0.3) | N·m |

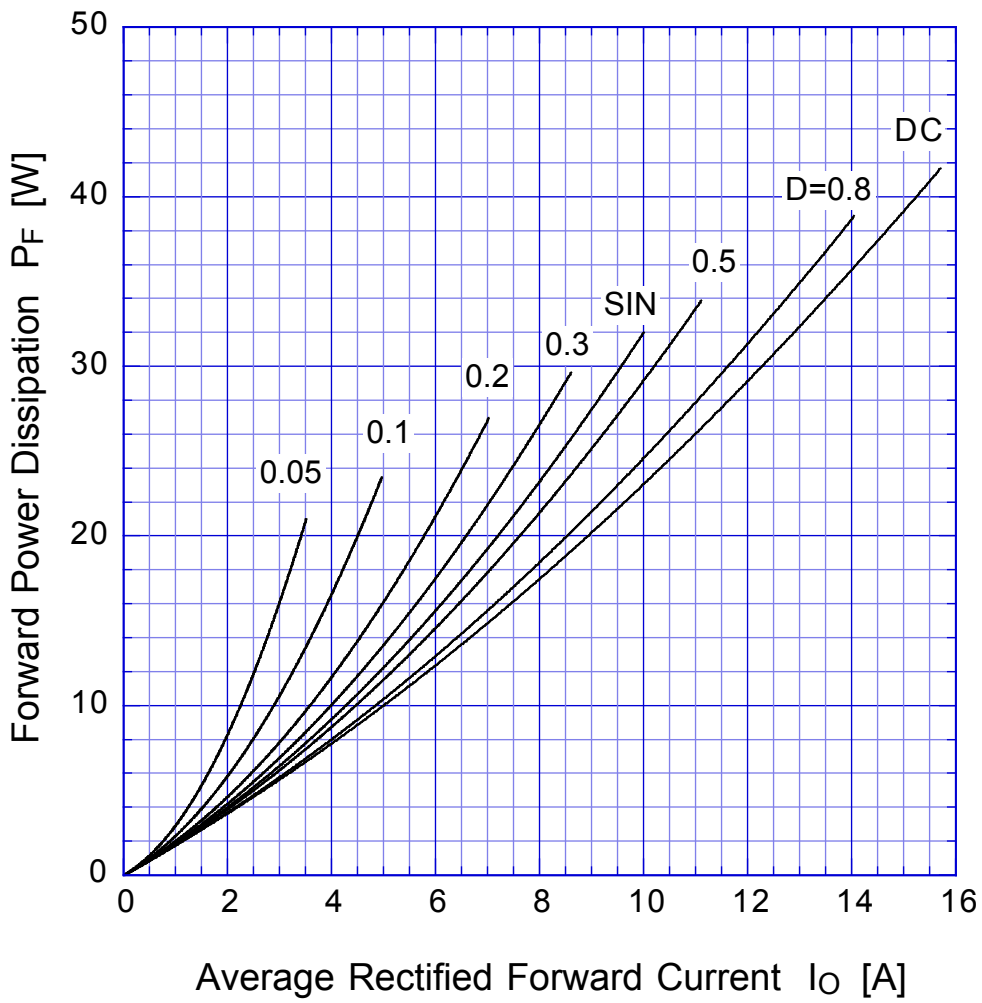
Electrical Characteristics (If not specified Tc=25)

| Item | Symbol | Conditions | Ratings | Unit |
|-----------------------|-----------------|---|---------|------|
| Forward Voltage | V _F | I _F =10A, Pulse measurement | Max.3.0 | V |
| Reverse Current | I _R | V _R =V _{RM} , Pulse measurement | Max.25 | μA |
| Junction Capacitance | C _j | f=1MHz, V _R =10V | Typ.55 | pF |
| Reverse Recovery Time | t _{rr} | I _F =0.5A, I _R =1A | Max.25 | ns |
| Thermal Resistance | θ _c | junction to case | Max.2.0 | /W |

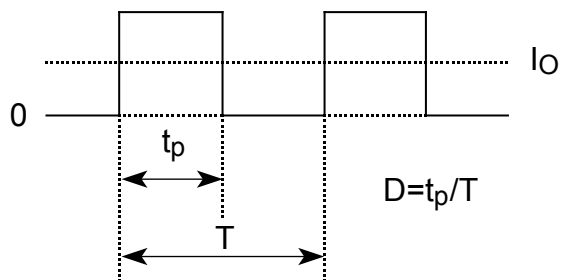
SF10L60U Forward Voltage



SF10L60U Forward Power Dissipation

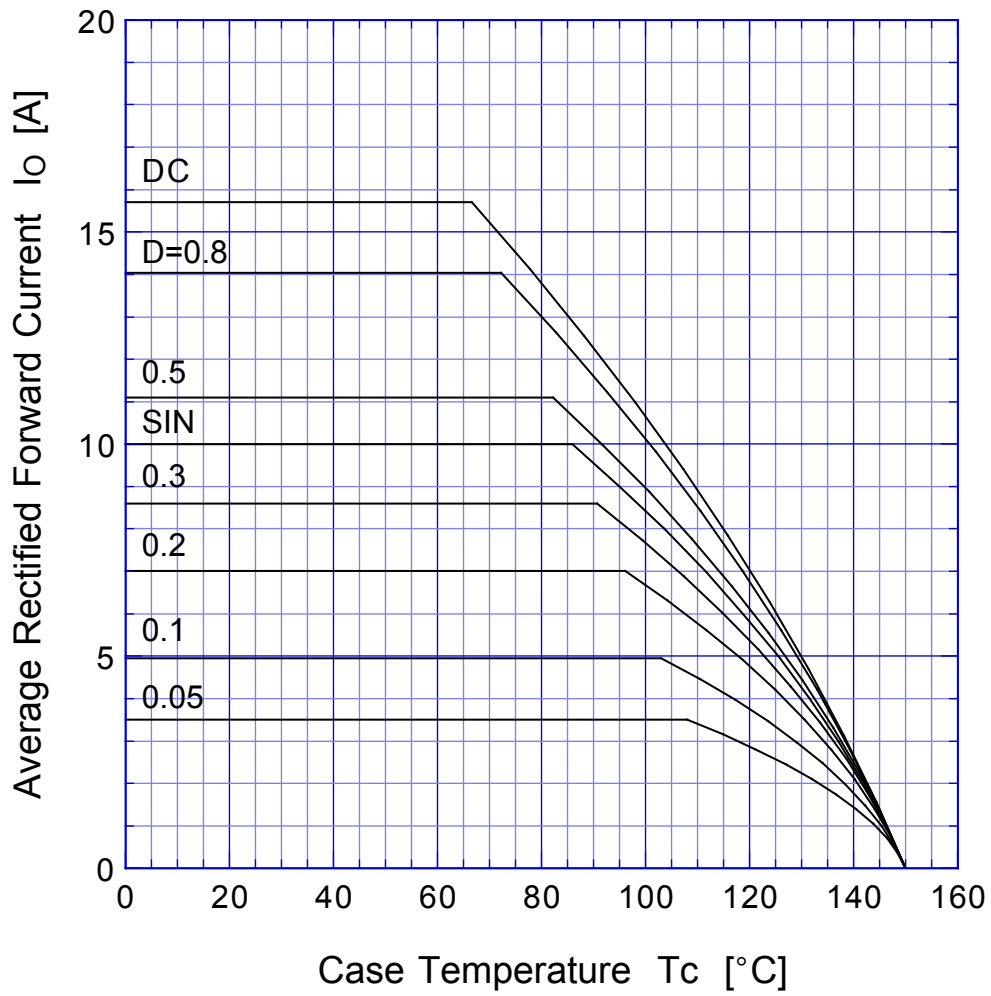


$T_j = 150^\circ\text{C}$



SF10L60U

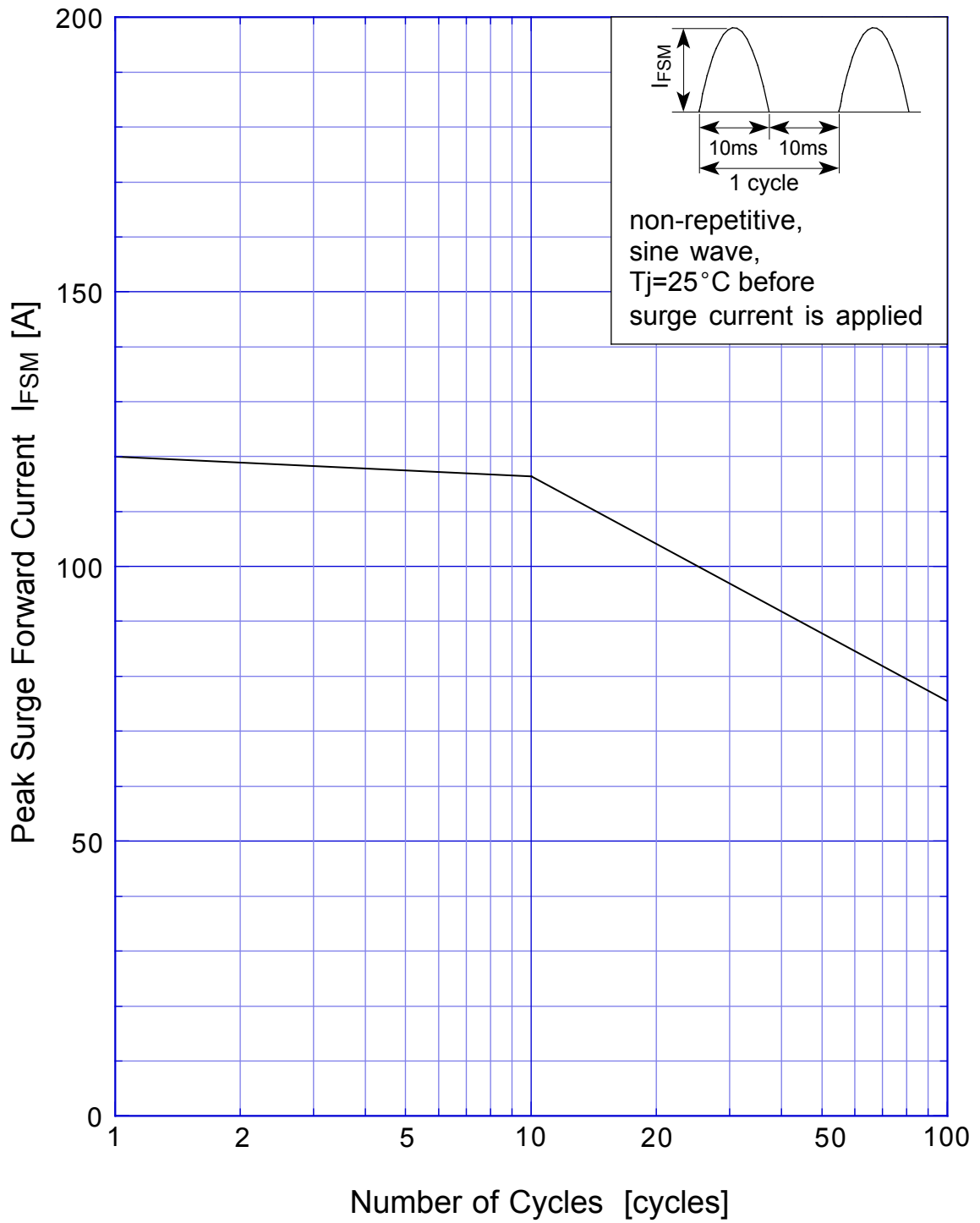
Derating Curve



$$V_R = V_{RM}$$



SF10L60U Peak Surge Forward Capability



SF10L60U Junction Capacitance

